



Noise Monitoring Result

Day Time (0700 - 1900hrs on normal weekdays)

Location: M1a - Harbour Road Sports Centre

Date	Time	Weather	Measurement Noise Level			Baseline Level	Construction Noise Level	Limit Level
			Leq	L10	L90	Leq	Leq	Leq
Unit: dB(A), (30-min)								
28/12/11	15:40	Sunny	72.4	75.4	67.4	72.2	59	75
04/01/12	09:56	Cloudy	73.2	76.2	68.3	72.2	66	75
10/01/12	09:59	Cloudy	74.3	76.8	70.3	72.2	70	75
19/01/12	13:51	Fine	72.7	75.4	68.2	72.2	63	75
26/01/12	16:55	Cloudy	70.8	74.0	64.3	72.2	71	75

Location: M2b - Noon-day gun area

Date	Time	Weather	Measurement Noise Level			Baseline Level	Construction Noise Level	Limit Level
			Leq	L10	L90	Leq	Leq	Leq
Unit: dB(A), (30-min)								
28/12/11	08:57	Fine	74.8	77.2	68.6	67.6	74	75
04/01/12	10:45	Cloudy	70.6	72.1	68.3	67.6	68	75
10/01/12	10:48	Cloudy	68.4	69.6	67.1	67.6	61	75
19/01/12	14:43	Fine	72.7	76.7	67.6	67.6	71	75
26/01/12	17:50	Cloudy	75.4	79.0	68.3	67.6	75	75

Location: M3a - Tung Lo Wan Fire Station

Date	Time	Weather	Measurement Noise Level			Baseline Level	Construction Noise Level	Limit Level
			Leq	L10	L90	Leq	Leq	Leq
Unit: dB(A), (30-min)								
28/12/11	09:40	Fine	66.8	69.1	64.1	68.8	67	75
04/01/12	11:30	Fine	67.7	70.0	64.6	68.8	68	75
10/01/12	11:28	Cloudy	69.6	71.7	66.2	68.8	62	75
19/01/12	10:45	Fine	68.8	69.2	64.0	68.8	69	75
26/01/12	09:30	Cloudy	68.7	70.7	65.3	68.8	69	75

Location: M4b - Victoria Centre

Date	Time	Weather	Measurement Noise Level			Baseline Noise Level	Construction Noise Level	Limit Level
			Leq	L10	L90	Leq	Leq	Leq
Unit: dB(A), (30min)								
28/12/11	10:33	Fine	70.2	72.1	67.3	67.3	67	75
04/01/12	13:00	Cloudy	68.3	69.8	66.1	67.3	61	75
10/01/12	13:02	Fine	71.2	72.9	67.6	67.3	69	75
19/01/12	08:15	Fine	69.1	71.6	66.9	67.3	64	75
26/01/12	10:27	Cloudy	66.8	68.2	65.0	67.3	67	75

Location: M5b - City Garden

Date	Time	Weather	Measurement Noise Level			Baseline Level	Construction Noise Level	Limit Level
			Leq	L10	L90	Leq	Leq	Leq
Unit: dB(A), (30min)								
28/12/11	16:26	Sunny	71.1	74.2	65.8	68.0	68	75
04/01/12	14:29	Cloudy	71.5	73.1	68.4	68.0	69	75
10/01/12	14:32	Fine	69.3	70.6	66.7	68.0	63	75
19/01/12	09:03	Fine	68.3	70.3	65.2	68.0	57	75
27/01/12	08:35	Cloudy	68.5	70.1	66.0	68.0	59	75

Location: M6 - HK baptist Church henrietta Secondary School

Date	Time	Weather	Measurement Noise Level			Baseline Level	Construction Noise Level	Limit Level
			Leq	L10	L90	Leq	Leq	Leq
Unit: dB(A), (30-min)								
28/12/11	11:30	Fine	73.0	74.4	71.0	70.7	69	70
04/01/12	13:47	Cloudy	73.4	74.8	71.6	70.7	70	70
10/01/12	13:46	Fine	73.0	74.4	71.1	70.7	69	70
19/01/12	09:46	Fine	72.6	74.0	70.4	70.7	68	70
27/01/12	09:08	Cloudy	73.2	74.7	70.8	70.7	70	70



Noise Monitoring Result

Day Time (0700 - 1900hrs on normal weekdays)

Location: M7e - International Finance Centre (Eastern End of Podium)

Date	Time	Weather	Measurement Noise Level			Baseline Level	Construction Noise Level	Limit Level
			Leq	L10	L90	Leq	Leq	Leq
Unit: dB(A), (30-min)								
28/12/11	13:47	Sunny	74.9	77.4	71.2	66.8	74	75
04/01/12	08:22	Cloudy	74.1	75.1	71.3	66.8	73	75
10/01/12	08:28	Cloudy	74.4	75.4	73.2	66.8	74	75
19/01/12	16:43	Fine	73.1	76.3	72.9	66.8	72	75
27/01/12	17:10	Cloudy	74.2	75.6	72.5	66.8	73	75

Location: M7w - International Finance Centre (Western End of Podium)

Date	Time	Weather	Measurement Noise Level			Baseline Level	Construction Noise Level	Limit Level
			Leq	L10	L90	Leq	Leq	Leq
Unit: dB(A), (30-min)								
28/12/11	14:30	Sunny	69.7	71.2	67.8	69.4	58	75
04/01/12	08:58	Cloudy	70.2	72.7	67.5	69.4	62	75
10/01/12	09:05	Cloudy	69.2	70.3	67.9	69.4	69	75
19/01/12	18:00	Fine	64.4	66.0	62.2	69.4	64	75
27/01/12	15:31	Cloudy	67.1	68.5	65.3	69.4	67	75



Noise Monitoring Result

Restricted Time (1900 - 2300 hrs on normal weekdays and 0700-2300 on holiday)

Location: M4b - Victoria Centre

Date	Time	Weather	Measurement Noise Level			Average Noise Level Leq	Baseline Noise Level Leq	Construction Noise Level Leq	Limit Level Leq
			Leq	L10	L90				
Unit: dB(A), (5-min)									
29/12/11	19:36	Fine	66.4	68.3	64.1	65.9	67.0	66	70
	19:41		65.8	67.2	64.1				
	19:46		65.6	66.9	63.9				
05/01/12	21:03	Cloudy	65.3	67.0	63.7	65.0	67.0	65	70
	21:08		64.9	66.4	63.4				
	21:14		64.9	66.5	63.2				
12/01/12	20:17	Cloudy	66.6	68.5	63.7	66.0	67.0	66	70
	20:22		65.5	67.1	63.5				
	20:28		65.8	67.4	63.6				
19/01/12	20:20	Fine	65.7	67.4	63.7	66.1	67.0	66	70
	20:25		65.9	67.4	64.2				
	20:31		66.6	68.9	63.6				
27/01/12	20:03	Cloudy	65.9	67.2	63.6	65.5	67.0	65	70
	20:08		65.5	67.1	63.3				
	20:14		65.0	66.6	63.2				

Location: M5b - City Garden

Date	Time	Weather	Measurement Noise Level			Average Noise Level Leq	Baseline Noise Level Leq	Construction Noise Level Leq	Limit Level Leq
			Leq	L10	L90				
Unit: dB(A), (5-min)									
29/12/11	20:10	Fine	65.2	67.4	62.2	64.8	67.2	65	70
	20:15		63.7	65.4	61.8				
	20:20		65.2	66.4	62.7				
05/01/12	21:41	Cloudy	64.3	65.8	62.1	64.4	67.2	64	70
	21:46		64.9	67.0	62.0				
	21:52		63.8	65.5	61.7				
12/01/12	20:53	Cloudy	64.5	65.9	62.2	64.3	67.2	64	70
	20:58		63.3	64.8	61.5				
	21:04		64.9	66.2	61.9				
19/01/12	20:51	Fine	65.5	67.1	63.2	65.6	67.2	66	70
	20:56		65.5	66.9	62.9				
	21:02		65.7	67.4	63.3				
27/01/12	20:25	Cloudy	63.8	65.5	61.7	64.2	67.2	64	70
	20:30		64.8	66.1	62.2				
	20:35		63.9	65.3	61.7				

Location: M1a - Harbour Road Sports Center

Date	Time	Weather	Measurement Noise Level			Average Noise Level Leq	Baseline Noise Level Leq	Construction Noise Level Leq	Limit Level Leq
			Leq	L10	L90				
Unit: dB(A), (5-min)									
28/12/11	22:06	Fine	68.4	70.7	60.3	68.7	71.3	69	70
	22:11		69.3	72.0	63.3				
	22:17		68.4	71.2	62.8				
03/01/12	20:30	Cloudy	69.8	72.9	62.2	69.4	71.3	69	70
	20:35		69.9	73.9	61.2				
	20:40		68.4	71.8	61.3				
10/01/12	20:35	Fine	69.5	71.8	63.2	70.5	71.3	71	70
	20:40		71.4	74.5	62.9				
	20:45		70.5	73.4	64.4				
17/01/12	20:06	Fine	69.0	71.4	64.9	69.8	71.3	70	70
	20:11		70.4	73.0	65.1				
	20:16		69.9	72.8	64.1				
26/01/12	20:11	Cloudy	73.0	76.7	65.6	72.6	71.3	67	70
	20:16		73.0	76.1	66.2				
	20:21		71.6	74.2	65.4				

Location: M2b - Noon-day gun area

Date	Time	Weather	Measurement Noise Level			Average Noise Level Leq	Baseline Noise Level Leq	Construction Noise Level Leq	Limit Level Leq
			Leq	L10	L90				
Unit: dB(A), (5-min)									
28/12/11	21:22	Fine	65.0	66.3	63.5	65.5	65.8	66	70
	21:27		65.1	66.4	63.2				
	21:34		66.4	68.7	64.2				
03/01/12	20:59	Cloudy	68.0	69.7	64.4	67.0	65.8	61	70
	21:04		66.5	68.1	64.4				
	21:09		66.3	68.3	63.7				
10/01/12	21:04	Fine	68.6	69.9	67.0	68.4	65.8	65	70
	21:09		68.4	69.7	66.9				
	21:14		68.2	69.4	66.6				
17/01/12	20:38	Fine	67.8	69.6	65.6	68.0	65.8	64	70
	20:43		68.5	70.8	65.9				
	20:48		67.5	69.4	65.3				
26/01/12	21:00	Cloudy	66.2	67.9	64.0	66.1	65.8	54	70
	21:05		66.3	67.8	64.1				
	21:10		65.7	67.8	63.9				

Location: M3a - Tung Lo Wan Fire Station

Date	Time	Weather	Measurement Noise Level			Average Noise Level Leq	Baseline Noise Level Leq	Construction Noise Level Leq	Limit Level Leq
			Leq	L10	L90				
Unit: dB(A), (5-min)									
29/12/11	19:08	Fine	65.6	67.6	62.0	65.4	65.5	65	70
	19:13		65.5	67.5	62.8				
	19:18		65.0	67.0	62.3				
05/01/12	20:32	Cloudy	65.1	67.6	61.8	64.9	65.5	65	70
	20:37		65.0	67.5	62.2				
	20:43		64.6	66.7	62.3				
12/01/12	19:45	Cloudy	69.0	70.3	67.5	68.6	65.5	66	70
	19:50		68.7	70.2	67.2				
	19:56		67.9	70.1	63.5				
19/01/12	19:56	Fine	66.0	68.4	62.4	65.8	65.5	54	70
	20:01		65.7	67.7	62.2				
	20:07		65.7	68.3	62.6				
27/01/12	19:35	Cloudy	66.2	69.0	62.9	66.0	65.5	57	70
	19:40		65.2	67.6	62.2				
	19:46		66.5	67.9	62.3				



Noise Monitoring Result

Restricted Time (1900 - 2300 hrs on normal weekdays and 0700-2300 on holiday)

Location: M7e - International Finance Centre (Eastern End of Podium)

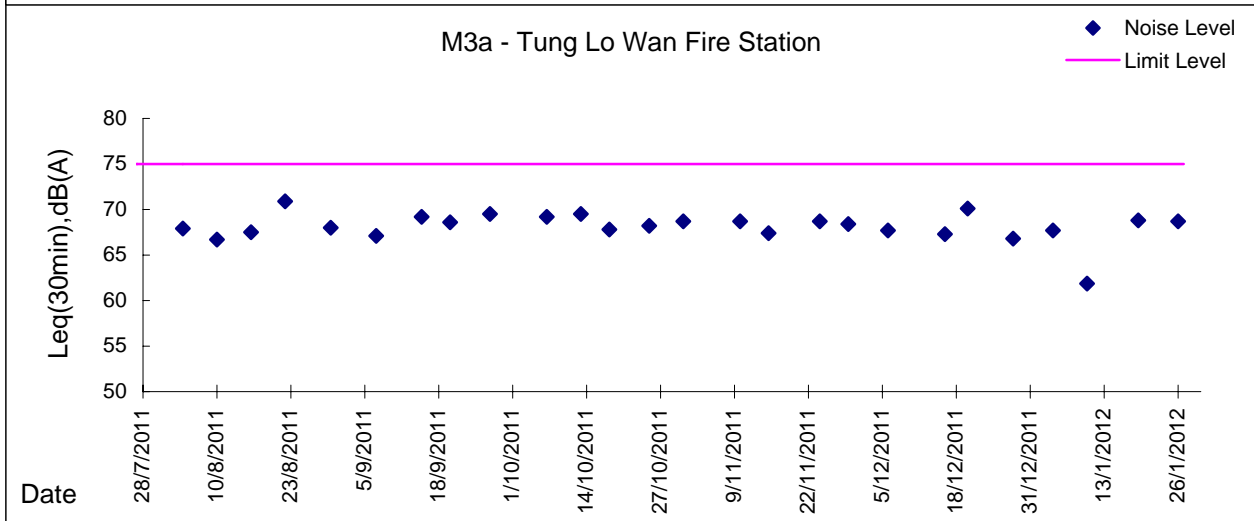
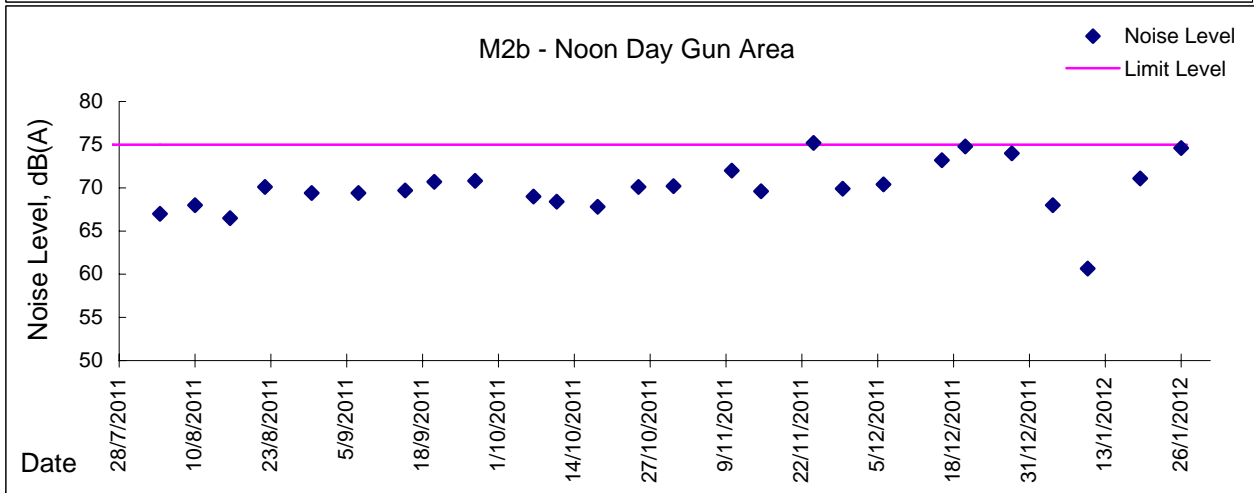
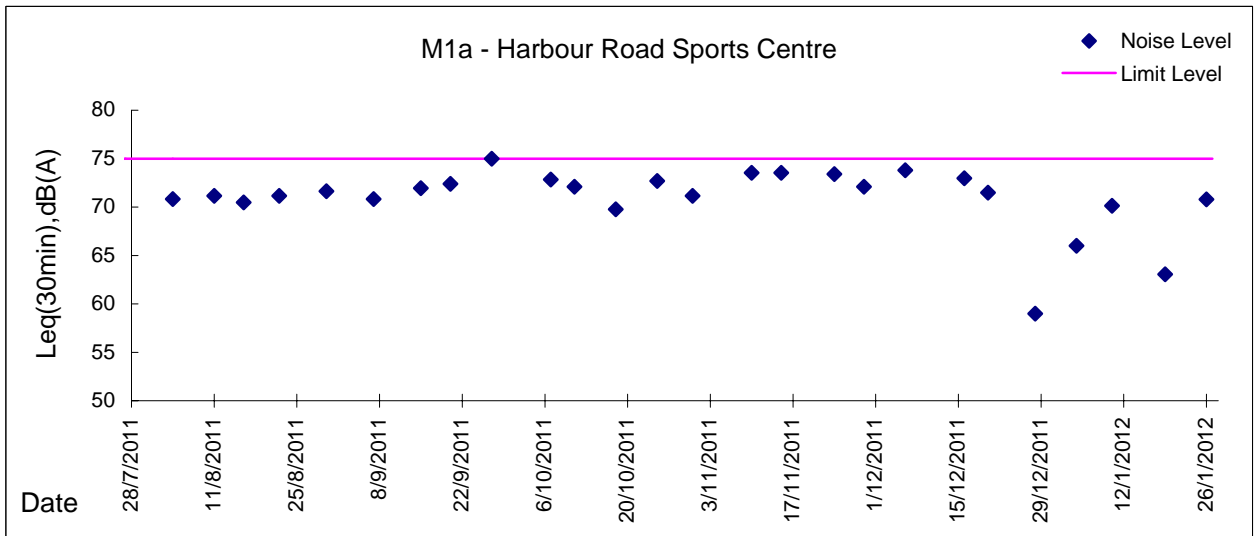
Date	Time	Weather	Measurement Noise Level			Average Noise Level Leq	Baseline Level Leq	Construction Noise Level Leq	Limit Level Leq
			Leq	L10	L90				
Unit: dB(A), (5-min)									
28/12/11	19:37	Fine	69.6	71.9	66.1	68.1	65.0	65	70
	19:43		67.6	68.6	65.9				
	19:49		66.6	67.3	65.8				
03/01/12	19:46	Cloudy	70.4	72.9	69.9	70.4	65.0	69	70
	19:51		70.5	72.9	69.1				
	19:56		70.2	73.2	69.2				
10/01/12	19:39	Fine	69.6	70.1	69.1	69.5	65.0	68	70
	19:44		69.4	69.8	68.9				
	19:49		69.5	69.9	69.0				
17/01/12	19:00	Fine	69.8	71.1	68.2	69.2	65.0	67	70
	19:05		69.1	70.3	67.9				
	19:10		68.7	70.1	67.4				
26/01/12	19:23	Cloudy	62.7	64.2	60.3	63.0	65.0	63	70
	19:28		63.5	66.1	60.3				
	19:33		62.9	65.1	59.9				

Location: M7w - International Finance Centre (Western End of Podium)

Date	Time	Weather	Measurement Noise Level			Average Noise Level Leq	Baseline Level Leq	Construction Noise Level Leq	Limit Level Leq
			Leq	L10	L90				
Unit: dB(A), (5-min)									
28/12/11	20:05	Fine	66.0	68.1	63.9	65.8	68.0	66	70
	20:10		65.8	67.5	64.0				
	20:16		65.7	67.3	63.8				
03/01/12	19:06	Cloudy	65.1	66.4	63.8	65.1	68.0	65	70
	19:11		64.9	65.9	63.3				
	19:16		65.3	66.2	63.6				
10/01/12	19:15	Fine	65.7	67.6	63.6	65.6	68.0	66	70
	19:20		64.8	66.6	63.1				
	19:25		66.2	67.6	64.4				
17/01/12	19:27	Fine	66.8	67.9	63.8	66.0	68.0	66	70
	19:32		65.2	66.8	62.9				
	19:37		65.9	68.1	63.2				
26/01/12	19:00	Cloudy	63.9	65.6	61.5	63.7	68.0	64	70
	19:05		64.2	65.9	61.6				
	19:10		62.8	64.2	61.3				

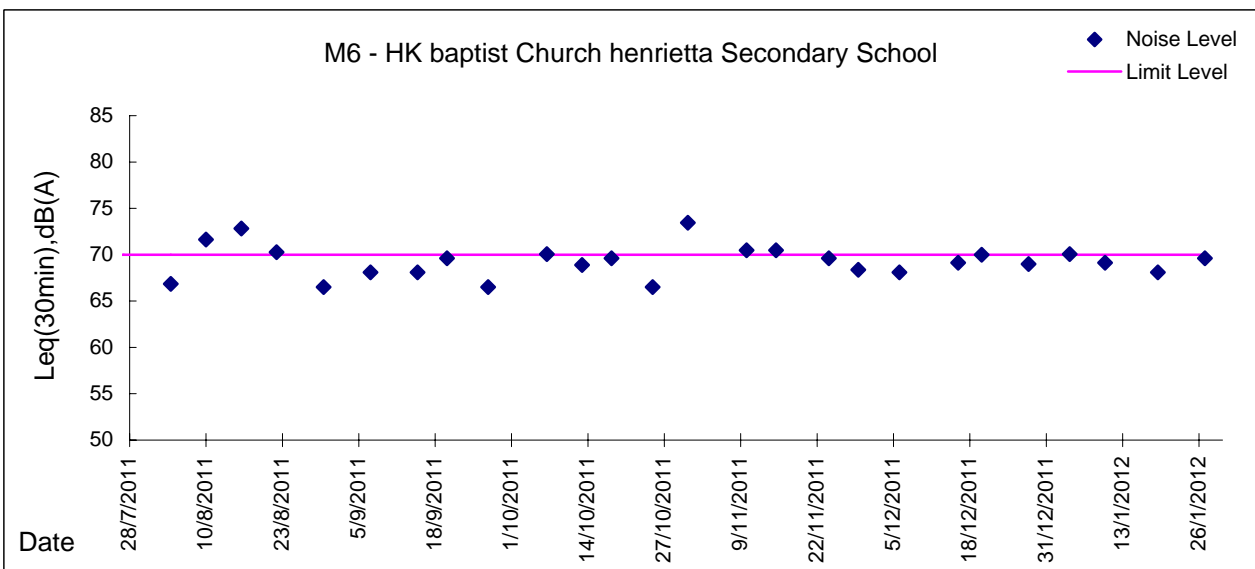
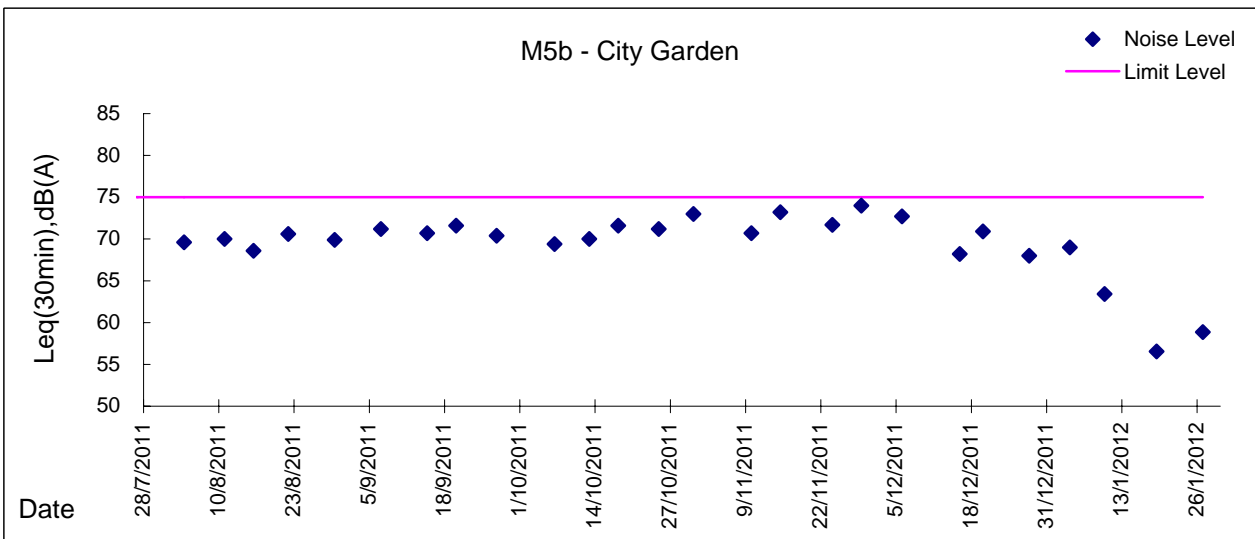
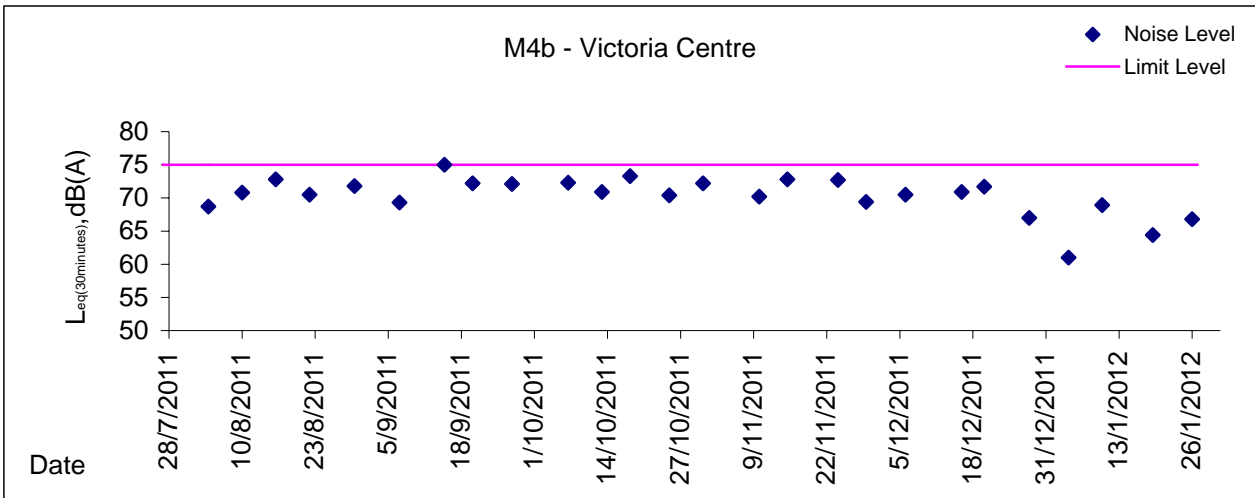


Graphic Presentation of Noise Monitoring Result
Day Time (0700 - 1900hrs on normal weekdays)



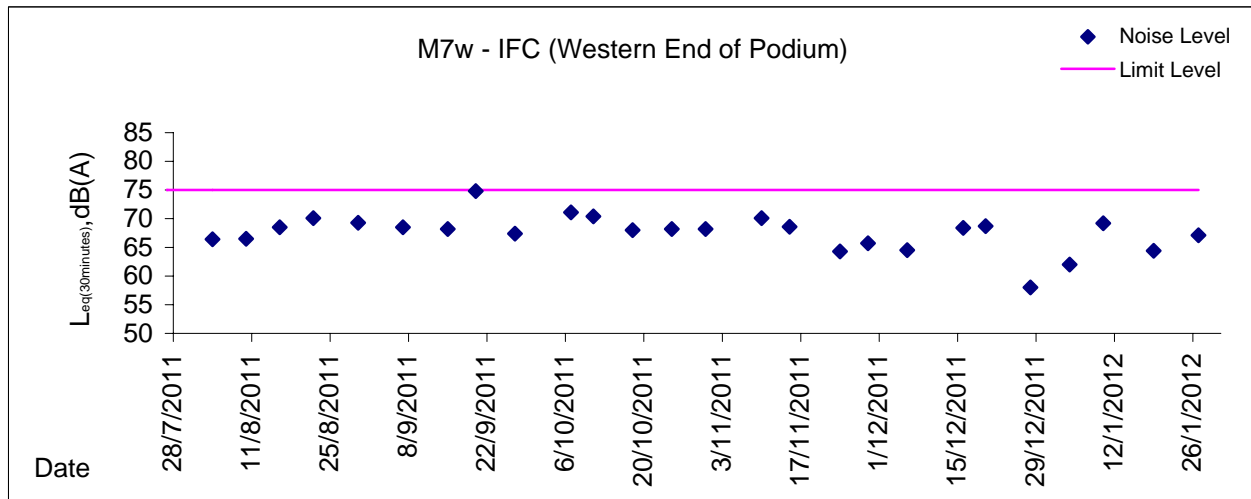
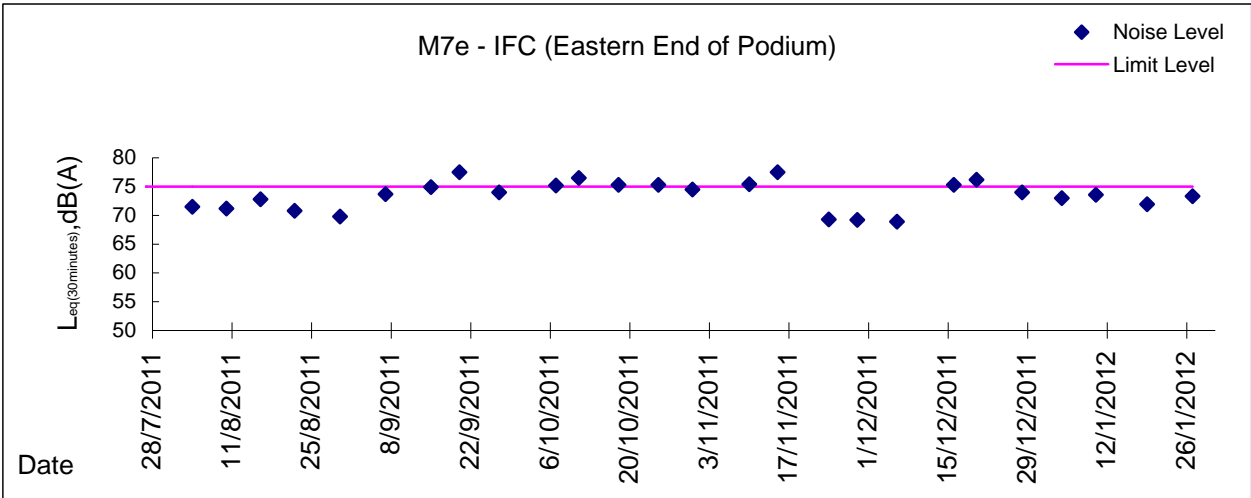


Graphic Presentation of Noise Monitoring Result
Day Time (0700 - 1900hrs on normal weekdays)





Graphic Presentation of Noise Monitoring Result
Day Time (0700 - 1900hrs on normal weekdays)





Graphic Presentation of Noise Monitoring Result

Restricted Time (1900 - 2300 hrs on normal weekdays and 0700-2300 on holiday)

